



The **online writing assessment tool** that helps teachers improve student writing with visible proof of progress.

*Proof of the difference you make!*



*“We now have a tool to continuously monitor our students’ writing and we know what to do immediately after we have results.”*

*– Riverton Primary School*



A 3P Learning product

[www.brightpath.com.au](http://www.brightpath.com.au)

# Proof of the difference you make!

**Brightpath Progress for Writing is proven to help students become better writers by boosting teaching and learning across the whole school. By supporting valuable teacher judgement with instant, accurate data, Brightpath provides reliable and meaningful assessment for both teachers and students.**

I'm Dr Sandy Heldsinger and I'm so excited to introduce Brightpath Progress. After witnessing the impact it has made on thousands of students across Western Australia and South Australia, it still truly excites me.

I originally trained as a secondary English teacher. But very early on, I was fascinated by assessment. I loved looking at students' work and figuring out what it told us. I wanted to find a way to tap into where students were in their learning and how to teach them.

***“Writing is one of the most important aspects of the curriculum and it's been hard to assess.”***

During my research with Dr Stephen Humphry, we found that using rubrics to assess students was inconsistent and ineffective, leading to clumping of score points. This problem is still prevalent in schools today. We knew we needed to develop a new methodology that would work effectively in a classroom setting.

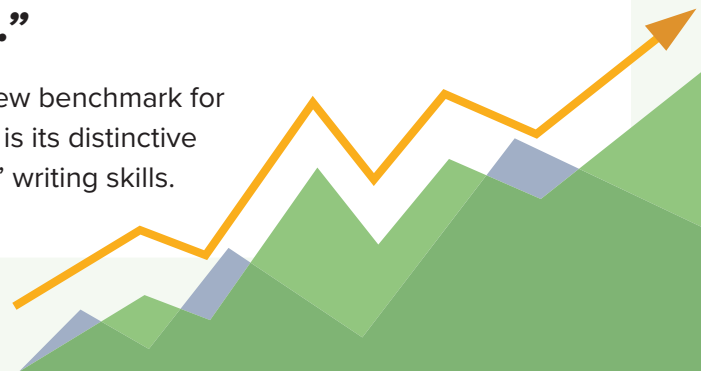
Over the course of 20 years, our trials and research led us to the answer. We discovered teachers were very good at comparing pairs of performances and deciding which performance was better. From there, we developed Brightpath, a program that uses this methodology to determine where students should be placed on a visual scale relative to scaled exemplars.

***“Teachers are given immediate results to then moderate.”***

Brightpath also overcame important limitations of traditional assessment programs like NAPLAN, such as the delay in data and availability of results for only a small number of year levels. Our methodology allows schools to immediately access valuable assessment data for writing across all year levels, as often as they wish.

***“Brightpath is a tool for teachers. Teachers want to teach well and Brightpath helps teachers do that.”***

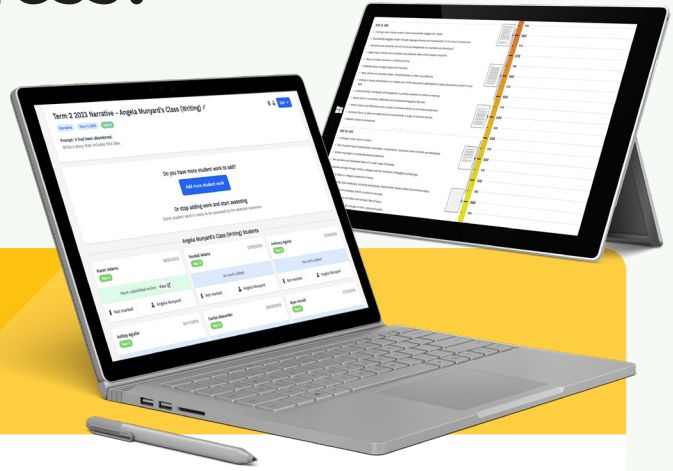
It's amazing to witness how Brightpath has established a new benchmark for writing assessment in Australia. What sets Brightpath apart is its distinctive methodology, which has been proven to enhance students' writing skills.



# What is Brightpath Progress?

Brightpath is an online formative assessment tool. It assesses students' writing against a set of exemplars and provides a visual scale to measure student progress.

It shows where they are and what they need to learn next.




## What is the research behind Brightpath Progress?

Dr Stephen Humphry and Dr Sandy Heldsinger started their research into formative writing assessments in 2008 with the Western Australian state testing program. Their research focused on ways to reliably assess typical classroom writing using a scaled scoring system.

Their goal was to improve the validity and consistency of marking writing assessments. The researchers focused on developing a two-stage method of assessment, replacing traditional rubrics.

The first stage of their research involved using pairwise comparisons to construct a scale. They used hundreds of work samples collected from a wide range of schools to develop the scale and understand how writing skills develop.

In the second stage, they developed and published exemplars and performance descriptors which all teachers then use to assess their students.



**Research found that teachers are excellent at judging relative differences. Brightpath builds on this ability and provides calibrated exemplars for all teachers to use as a point of comparison. In doing so, teachers gain greater insights into how writing progresses.**

## Why Brightpath works

Brightpath reports provide teachers with detailed, insightful information about their students' progress. The data shows what students can do and what they need to learn and can also be used as a pre- and post-assessment tool.

### Leveraging whole-school data to improve student performance

Having access to whole-school data and years' worth of results allows teachers to compare current student work to past examples to see if there are trends in student achievement. This enables teachers to tailor their teaching approaches based on data, resulting in better outcomes for students. By looking at the same exemplars, teachers can engage in productive discussions about what constitutes quality student work, leading to a shared understanding of academic standards. School moderation enhances the credibility of your school's assessment and reporting practices.



**Teachers can view their students' growth within a year and across year levels, to prove the success of their teaching strategies.**



## How Brightpath evaluates student growth

Students complete Brightpath writing assessments online or on paper, which means teachers can assess younger students' handwritten performances but also allow older students to type online.

When students complete their work online, Brightpath generates a predicted score. Teachers then complete a moderation of their students' work and determine the final scores.

**The program does an initial assessment, which then needs a teacher's professional judgement to assess students' success.**

Backed by data, teachers can provide immediate evidence-based feedback about students' strengths and weaknesses.

**It's formative assessment at its very best – allowing you to make a measurable impact on students' writing ability in class and across the whole school.**

## Brightpath proves the impact you make

The Teacher's Ruler is a unique visual tool that positively impacts writing ability. This tool provides teachers with an evidence-based method of measuring their students' writing performance data.

Teachers compare students' written work to calibrated exemplars. When students complete their work online, the program generates a predicted score, which teachers can then confirm or refine.

The Teacher's Ruler provides next-step teaching points that are meaningful and targeted.

530 to 585

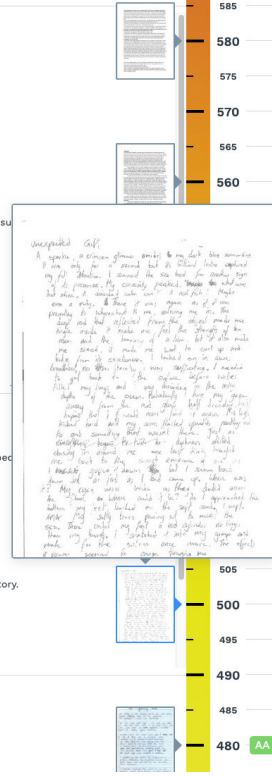
- A strong, more mature writer's voice successfully engages the reader.
- Successfully engages reader through language choices and manipulation of structural components.
- Narratives are complete, and all structural components of a narrative are developed.
- Beginning to include more complex and elaborate ideas which support storyline.
- Many narratives include an underlying theme.
- Selected ideas strongly support the narrative.
- Many stories are character driven. Characterisation is often very effective.
- Setting is clearly established as an integral part of the story and is developed to create atmosphere su type.
- Lexical density is increased, and vocabulary is carefully selected to enhance meaning.
- Word choice is controlled, deliberate and maintained throughout the text.
- Writer selects and effectively uses a variety of cohesive devices to link ideas across text.
- Narrative flows, as ideas are organised and connected by a range of cohesive devices.
- Narrator stance is maintained.

490 to 530

- A stronger writer voice is evident.
- Text structure has all components, (orientation, complication, resolution) some of which are developed
- Writers may begin to manipulate textual elements.
- Text contains well developed ideas on a wider range of themes.
- Characters emerge through actions, dialogue and the revelation of thoughts and feelings.
- Setting is often an integral component of story.
- Often effectively uses vocabulary, including word groups, that provide relevant detail and enhance story.
- Uses a wider range of vocabulary which is suited to text type.
- Uses cohesive devices to link ideas and maintain flow of story.
- Frequently uses paragraphs for changes of time, scene and action.

410 to 490

- Engages reader by adjusting writing to take account of audience, purpose and context.
- Writes a narrative which has an introduction, complication and a resolution.
- Familiar ideas, details and events are developed and relevant to the storyline.



## Brightpath Progress: A 4-Step Solution

Achieve schoolwide writing improvement with our simple 4-step plan:

### Step 1: Illuminate Learning

Conduct two whole-school assessments, at least 8 weeks apart: a pre-test and a post-test. Calibrate student writing samples against the teacher's exemplars for a common evidence-based scale. The Automated Marking Assistant will predict score zones for typed writing.

### Step 2: Targeted Teaching Points

Use the Teacher's Ruler to identify student strengths (Glow) and growth areas (Grow). Choose 6–8 areas to focus on and provide explicit instruction.

### Step 3: Empower Student Agency

Share Grow Goals with your class. Display the Writing Teacher's Ruler in the classroom to highlight progress. Students select their own Grow Goals. Experience increased engagement, agency and enthusiasm among students.

### Step 4: Celebrate Milestones

Celebrate visible progress as Growing Goals turn into Glowing markers. Report three achieved goals and the next three in progress to parents.

With Brightpath, your teachers can use this 4-step plan to achieve visible growth in student writing across your entire school. Elevate your students' skills and empower them to become proficient writers.

## Boosting student engagement

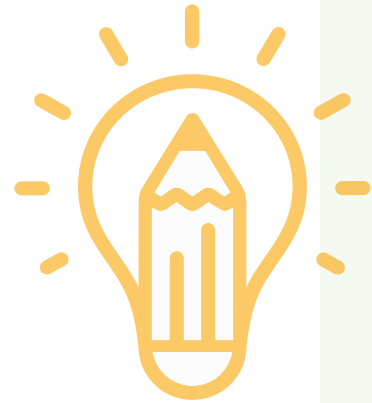
The Teacher's Ruler enables students to take ownership of their progress. Teachers can display the Ruler in class to remind students how far they've come and to encourage them to keep learning.

The Teacher's Ruler provides students with clear goals that match their abilities and are easy to understand. As students track their progress and celebrate their learning, their confidence increases, encouraging them to improve.

Teachers can also provide students with Brightpath reports and resources for extra motivation.

### Valuable **collaboration** with your peers

With Brightpath, teachers moderate and compare work with similar features, resulting in more consistent marking.



**Marking consistency improves across the school and across multiple schools. Tracking student progress across years and schools is made possible by reliable, evidence-based data.**

### Teaching covers **all aspects of writing**

Brightpath is making an impact by enabling teachers to focus on all facets of writing using a standardised, evidence-based scale. Where one teacher may favour narrative and another grammar, Brightpath focuses teaching on what each student needs to learn.



## Marking is insightful and rewarding

Marking is quicker and more rewarding with Brightpath than traditional methods such as a rubric. Assisted marking does an automatic initial writing assessment, saving teachers time.

Teachers then do a final assessment focusing on each student's writing ability, analysing strengths and weaknesses from a human perspective.

**Schools are successfully differentiating learning using Brightpath data.**



## Parents value the reports

Brightpath reports are easy to read and visually appealing. Teachers can also modify the reports to provide meaningful and accurate feedback at parent-teacher interviews, sharing concrete ways to help their child at home.

**Parents appreciate quality feedback about their child's current knowledge and where they need the most help.**



# Creating **confident** students with meaningful feedback

Brightpath provides an effective and meaningful formative assessment tool for the classroom, giving teachers immediate results. Students can compare their work with evidence-based data and exemplars from other students, greatly impacting their writing ability. The data is constructive and relevant.



## Empowering students to take ownership of their learning

With Brightpath, students know their strengths and weaknesses and can take an active role in their learning from a young age. This sense of ownership changes their mindset and vocabulary and learning becomes student-directed.

*“Using Brightpath makes us more aware of what a good piece of writing contains, what is missing in it and areas of improvement.”*

– Bramfield Park Primary School

## **Thousands** of schools have witnessed the difference Brightpath can make

Students in high Brightpath usage schools were three months ahead of other students between Years 3 and 5, as proven by their NAPLAN scores.

Western Australia adopted Brightpath as the state testing program in 2017, followed by South Australian Department schools two years later. Since its implementation, Brightpath has delivered on its promise of increasing students' results.

Brightpath is also trusted and used by ACARA to establish the National Literacy Learning Progressions, which supports the Australian Curriculum.

**Brightpath is currently providing reliable and consistent evidence-based data within and across thousands of schools.**







## East Hamersley Primary School, Perth WA

### Key highlights

- Teachers use data to support their teaching
- Teachers can easily review their marking which improves consistency
- All staff share the responsibility for school improvement

East Hamersley started using Brightpath in 2017. But it wasn't until the leadership team invested time and energy into the tool, that the school community as a whole embraced the program. When teachers gained the confidence to implement Brightpath in their classroom, they started using the data to inform their teaching.

Prior to Brightpath, teacher moderation of writing was inconsistent. With Brightpath, teacher moderation is now held twice a term. This in turn, creates a supportive environment and improved marking consistency.

Teachers at Hamersley have widened their focus beyond just improving their own class performance. They now focus on the growth of individual students, cohorts and the school as a whole. As a result, writing has improved and there is a more positive learning culture.

***“Before Brightpath, we didn’t really moderate. Brightpath opened up the conversation around moderation and improvement and provided the tool to do it. We now have processes in place and teachers are being protected within our supportive culture, enabling us to improve.”***

– Dawn McDonald, School Curriculum Lead Teacher



# Bramfield Park Primary School, Perth WA

## Key highlights

- Teaching writing is structured and consistent
- Students self-assess and understand where they're at in their progress
- Pre- and post-tests have proven a noticeable increase in students' writing skills

Bramfield Park Primary School started using Brightpath in 2019. Using the program, teachers became aware of the features that make up good writing, leading to a change in their teaching approach. Instead of following a pre-determined teaching path, they began to explicitly teach areas of weakness. As a result, not only did the marking of writing become more consistent, but the way in which writing was taught also improved, leading to better results.

Students at Bramfield Park completed pre- and post-tests twice a year in report writing and narrative and the data clearly showed student improvement using Brightpath.

Older students have the Teacher's Ruler displayed in their classroom so they can self-assess and take ownership of what they need to work on to improve their writing.



***“Brightpath takes apart everything in a piece of writing, not only focusing on conventions. This allows us to not only assess, but teach accordingly.”*** – Lucy Fitzhardinge, Literacy Coordinator

# Riverton Primary School, Perth WA

## Key highlights

- Moderation and discussion of students' work is structured and meaningful
- Individual student growth and goal setting is supported through Brightpath
- Parents are provided with detailed information on student progress with work samples

After a brief trial period with a cohort of Year 1 students in 2018, Riverton Primary decided to roll out Brightpath across the whole school. The leadership team scheduled teacher training and support during the transition, as their goal was for Brightpath to play a central role in Riverton's assessment schedule.

Once teachers saw the data's value, Brightpath became an impactful tool in the classroom.

The Brightpath Ruler is displayed in the classroom so students can take ownership of their learning and see where they need to improve. Teachers have also found that Brightpath supports Riverton's focus on individual growth and goal setting.

Teachers have found the data useful during parent-teacher interviews. Parents value the data, especially when comparing their child's progress both at a school and state level. The detailed data, along with the work samples, are easy for parents to read and clearly show the teacher's direction to improve their child's results.

***“Brightpath has opened conversations between students and teachers that the school didn't have before.”***

– Lea-anne Frossos, Deputy Principal at Riverton Primary School





*Proof of the difference you make!*

## Get started using Brightpath Progress in your school. Register your interest today.

**Plus!** Discover the power of **Brightpath Maths, the online formative maths assessment program** helping teachers improve their maths scores for students in Years 2–9. Brightpath Maths provides **immediate feedback and intuitive reporting**, which enables teachers to teach for impact and efficiently differentiate instruction for **personalised learning in maths**.

With clear and engaging questions, easy-to-interpret results and comparative analysis, teachers can plan their next steps and make **evidence-based decisions for improved teaching practices and student achievement**.

*“Brightpath has provided us great focus.  
It’s a good way of assessing learning,  
helping to inform teacher planning  
by showing teachers what to do next  
through the teaching points.”*

*– Lance Holt School*



[brightpath.com.au](https://brightpath.com.au)

Ph: 08 9322 7429

E: [brightpath@brightpath.com.au](mailto:brightpath@brightpath.com.au)

 A 3P Learning product